



COOL DAYLIGHT  
6000-6500K



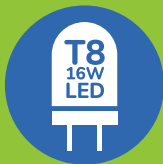
VANDAL  
GUARD

# 4ft Vandal Guard - Single Batten

- Light white powder coated steel body
- 0.5mm pressed metal construction
- Quality powder coated cage
- Large size terminal blocks, easy to fit cable
- 2 years warranty on the complete fitting
- Nickel-cadmium battery (NiCad) 1500mAh 7.2V



SINGLE BATTEN



T8 16W LED  
LIGHT SOURCE



COOL DAYLIGHT  
6000-6500K



STURDY STEEL  
CONSTRUCTION



ENERGY  
SAVING



REDUCED  
CONSUMPTION



LONG LIFE  
NiMH BATTERY



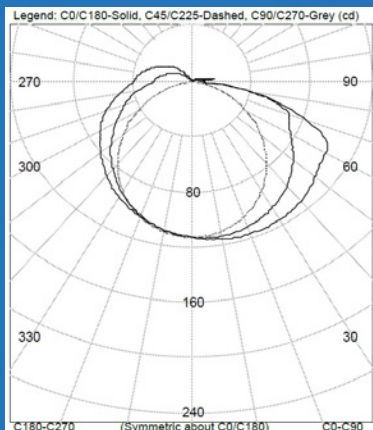
2 YEAR  
WARRANTY\*

## TEST DATA

## EFSBLV36-S



DIMENSIONS: W1235 X D108 X H70MM



## Emergency Classification

C0	<b>D100</b>
C90	<b>D25</b>
C180	<b>D63</b>

## Performance Summary

LUMINOUS FLUX	<b>453lm</b>
LUMINAIRE POWER	<b>4.39W</b>
LUMINOUS EFFICACY	<b>103lm/W</b>

## Classifications

C0 Plane represents: C0	C90 Plane represents: C90, C270	C180 Plane represents: C180
A100	A100	A100
B100	B100	B100
C100	C80	C100
<b>D100 (24.6M)</b>	<b>D25 (15.3M)</b>	<b>D63 (21.1M)</b>
E100	E63	E80

EzyFit 2 x 16W 1200mm Bare LED Batten. Folded/welded metal base with white finish, extent ~ 1232 x 104 x 45mm deep. Two LED 16W LED tubes centred 53mm apart and 20mm below reflector. Two Min Hua Electric "208030360586" AC170-265V 50Hz electronic drivers. Lamp in C180 plane energised during test. Tested at 6.98 Vdc. For full product details please contact EzyFit.

SPECIFICATIONS SUBJECT TO CHANGE WITHOUT NOTICE.  
\*WARRANTY FOR COMPLETE FITTING ONLY

Bold entries represent the classification yielding the maximum spacing between luminaires as ranked by Tables 5.1-5.5 of AS2293.3 2005 Part 1 when mounted at a height of 2.7m. Spacing distance is bracketed. For the ranking and spacing distance of luminaires mounted at other heights, refer to tables 5.1-5.5

