



COOL DAYLIGHT
6000-6500K



DIFFUSED
LIGHT

4ft Diffused - Single Batten

- Light white powder coated steel body
- 0.5mm pressed metal construction
- Quality acrylic diffuser
- Large size terminal blocks, easy to fit cable
- 2 years warranty on the complete fitting
- Nickel-cadmium battery (NiCad) 1500mAh 7.2V



SINGLE BATTEN



T8 16W LED
LIGHT SOURCE



COOL DAYLIGHT
6000-6500K



STURDY STEEL
CONSTRUCTION



ENERGY
SAVING



REDUCED
CONSUMPTION



> 50,000
HOURS*
NiMH BATTERY



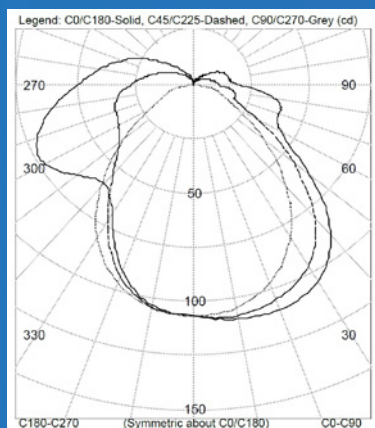
2 YEAR
WARRANTY*

TEST DATA

EFSBLD36-S



DIMENSIONS: W1235 X D108 X H97MM



Emergency Classification

C0	D40
C90	D16
C180	D63

Performance Summary

LUMINOUS FLUX	363LM
LUMINAIRE POWER	4.30W
LUMINOUS EFFICACY	84.5LM/W

Classifications

C0 Plane represents: C0	C90 Plane represents: C90, C270	C180 Plane represents: C180
A100	A100	A100
B100	B100	B100
C100	C50	C80
D40 (18M)	D16 (13M)	D63 (21.1M)
E63	E40	E50

EzyFit 2 x 9W 600mm LED Batten. Folded/welded metal base with white finish, extent ~ 622 x 103 x 50 mm deep. Wrap around prismatic diffuser retained by metal end-caps forms luminous 605 x 105 x 45 mm deep. Two LED 9W LED tubes centred 53 mm apart and 20 mm below reflector. Two Min Hua Electric Co. Ltd. "204030360586" AC170-265V 50Hz electronic drivers. Tested at 6.98 Vdc. For full product details please contact EzyFit.

Bold entries represent the classification yielding the maximum spacing between luminaires as ranked by Tables 5.1-5.5 of AS2293.3 2005 Part 1 when mounted at a height of 2.7m. Spacing distance is bracketed. For the ranking and spacing distance of luminaires mounted at other heights, refer to tables 5.1-5.5

SPECIFICATIONS SUBJECT TO CHANGE WITHOUT NOTICE.
*WARRANTY FOR COMPLETE FITTING ONLY

